

TP-Link HX220 Wi-Fi Range Extender Setup

Mesh Wi-Fi unit – Standalone Setup

The instructions and screenshots below relate to TP-Link devices, primarily the TP-Link vx230v (supplied by Activ8me).

Depending on the router's make and model, your router may have slightly different steps.

We recommend searching online for customised instructions for your Wi-Fi router and use them in conjunction with these instructions.

HX220 Setup Instructions (for use as a Wi-Fi Range Extender)

Before you begin, ensure your Wi-Fi router is powered on and connected to the internet.

- **Step 1 - Power up the HX220**

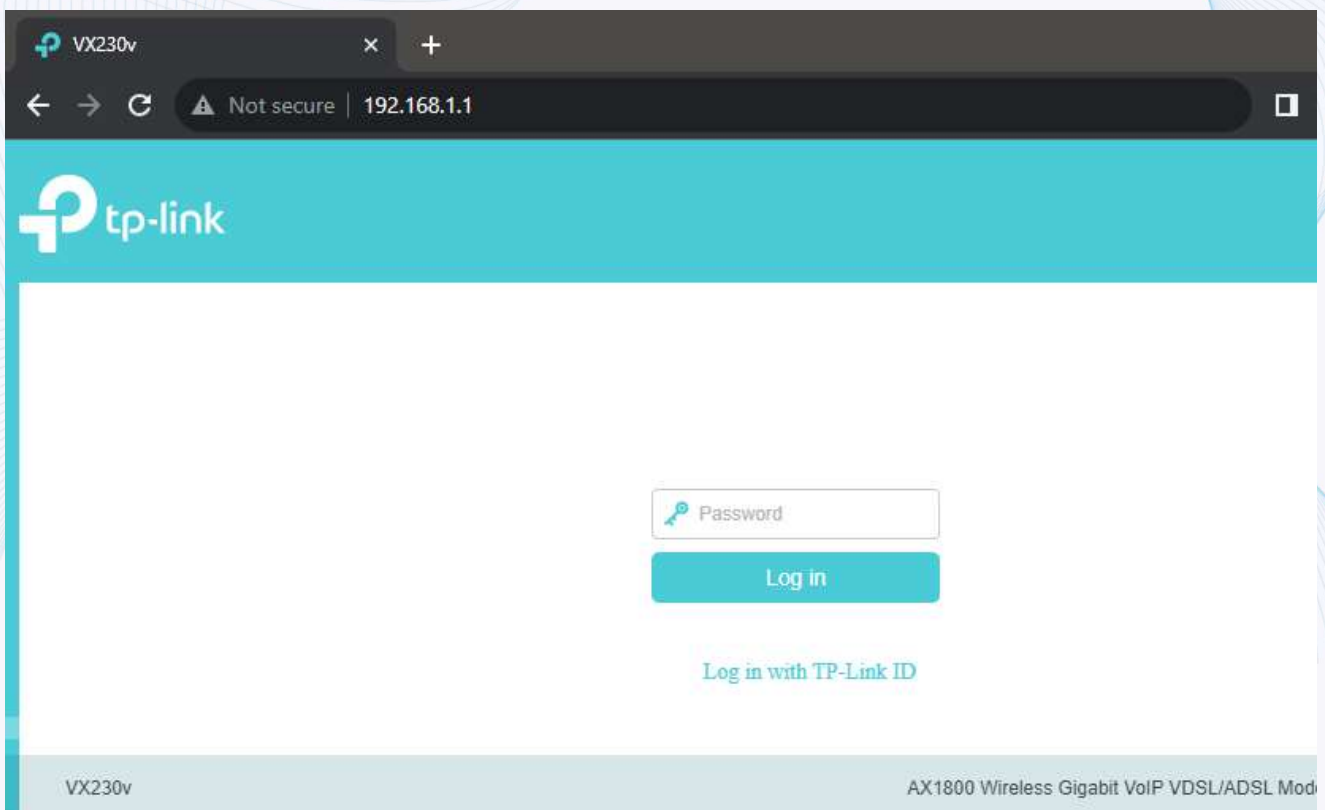
Connect the HX220 Wi-Fi Extender to power using the power adapter supplied with the unit. Once the LED is flashing blue, the device is ready for configuration.

- **Step 2 - Log in to your Wi-Fi Router**

On a device (like a phone or PC) connected to your Wi-Fi network, use your internet browser to navigate to your router's home page.

The address is often <http://192.168.1.1>, but if that address doesn't work, you can find your router's gateway address on the sticker on your router.

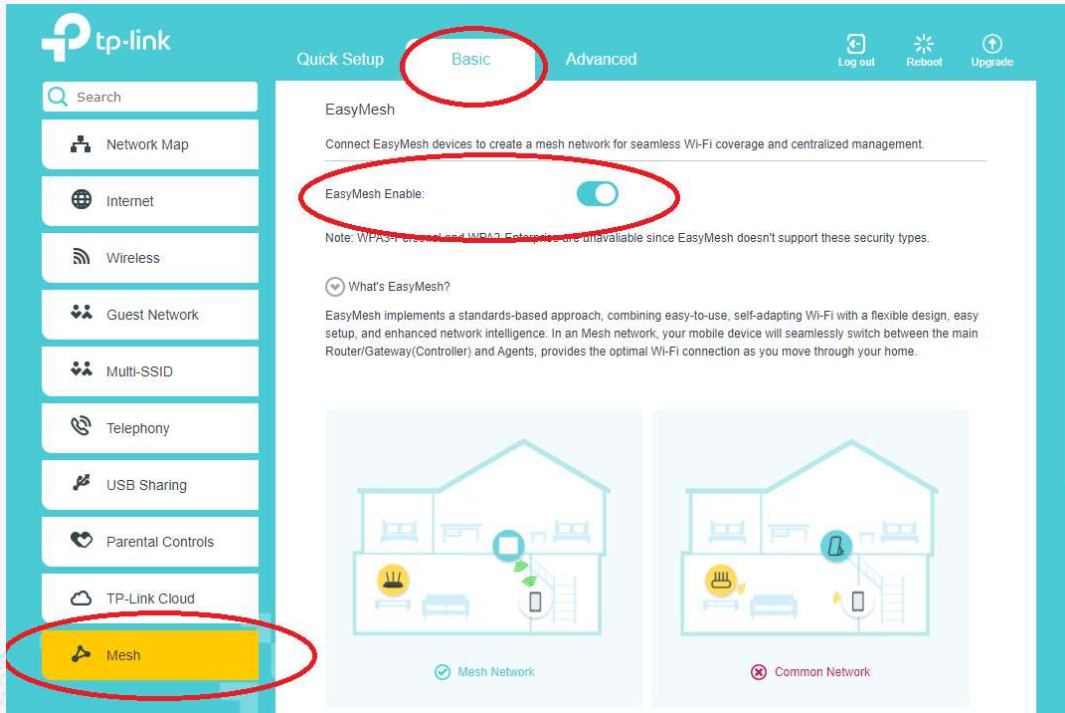
The first time you log in to a vx230v, you'll be asked to choose a password.



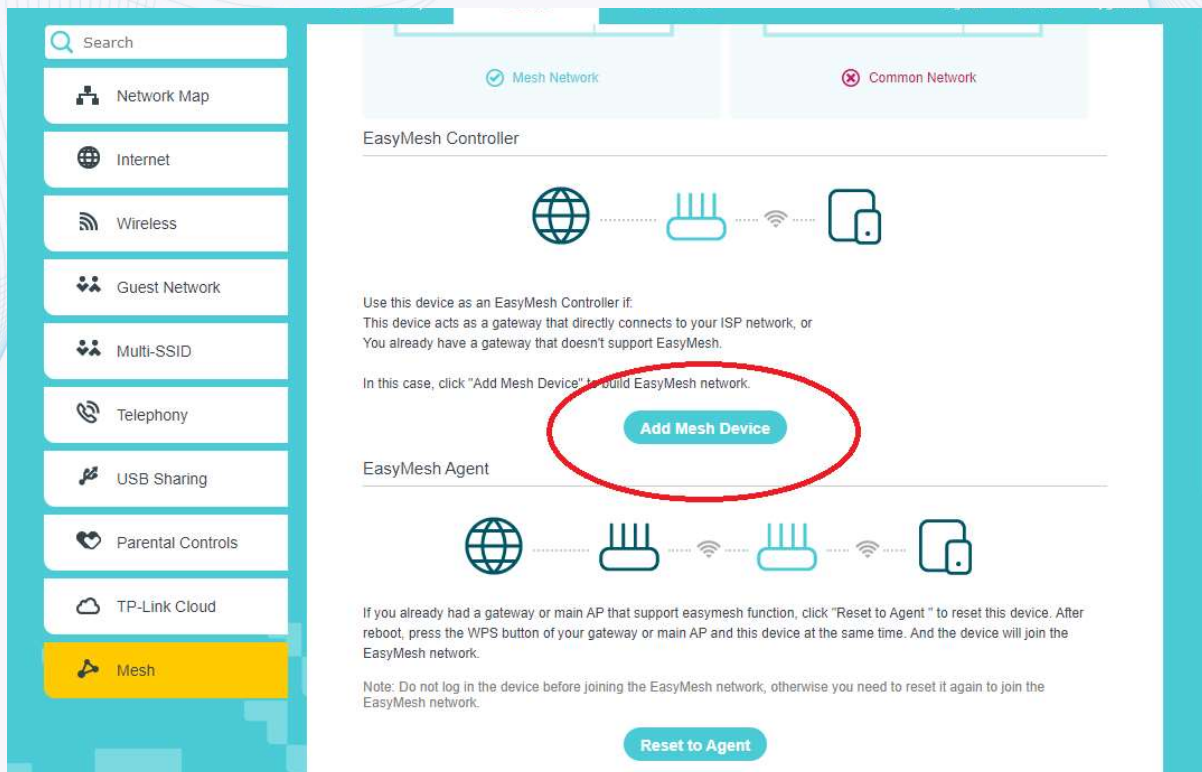
TP-Link HX220 Wi-Fi Range Extender Setup

- **Step 3 - (For TP-Link devices) Check 'EasyMesh' is Enabled**

Once logged in, go to **Basic > Mesh** and make sure EasyMesh is enabled.

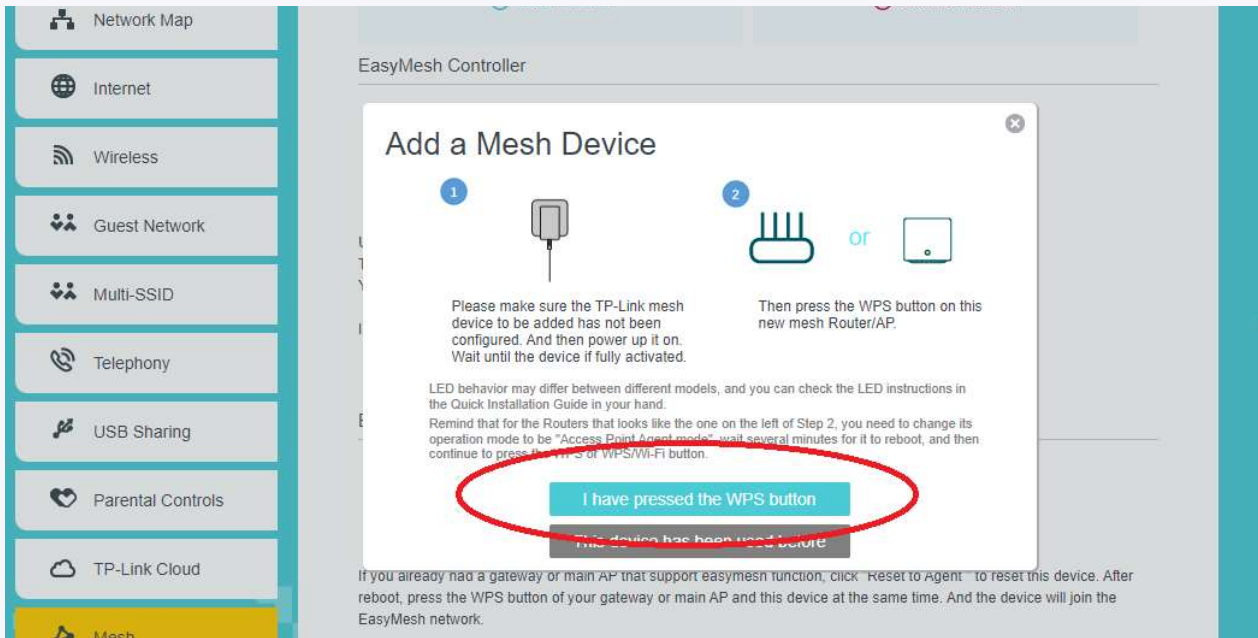


- **Step 4 - Scroll down and click Add Mesh Device.**

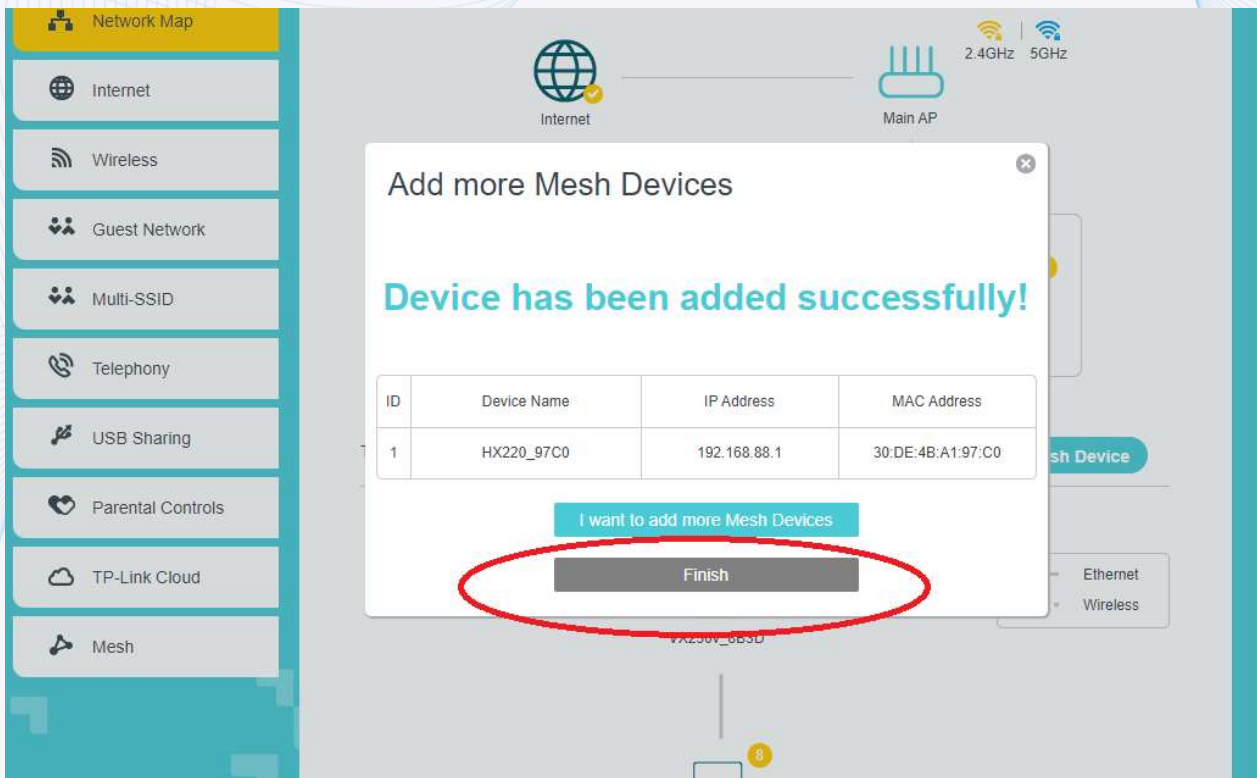


TP-Link HX220 Wi-Fi Range Extender Setup

- **Step 5** - Click the WPS button on the back of the HX220, then click 'I have pressed the WPS button' on the screen.
Wait 3-5 minutes until it automatically detects and adds the Mesh unit.

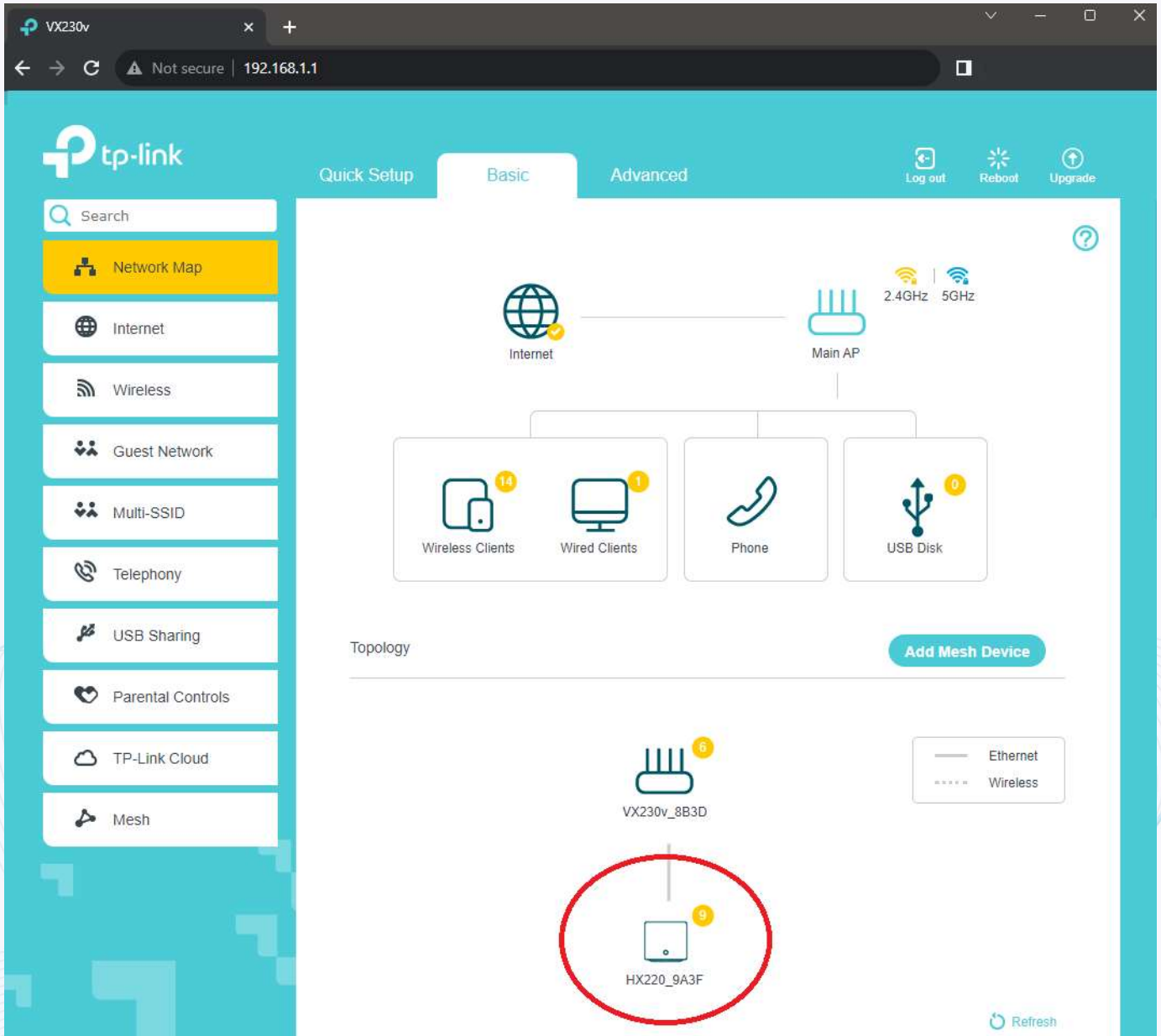


- **Step 6** - Once the HX220 has been added successfully, click 'Finish' to complete the setup.



TP-Link HX220 Wi-Fi Range Extender Setup

Once completed, the HX220 will be listed on the 'Network Map' page, and you can start using the device.



TP-Link HX220 Wi-Fi Range Extender Setup

Guide to the LED Colours

The HX220 has an LED light that changes its colour and pattern based on its working status.

Colour / Pattern	Indication
Yellow	The connection quality of the HX220 is normal.
Flashing Yellow	The HX220 is starting up or resetting.
Flashing Blue	The HX220 is ready for configuration.
Fast Flashing Blue	The HX220 is trying to establish a WPS or mesh connection. This process can take two or more minutes.
Blue	The HX220 is set up as a controller (router), or the connection to the controller (router) is good but the internet is unavailable.
White	The HX220 is configured, and the internet is available.
Flashing White	The HX220 is upgrading the firmware.
Flashing Red	The HX220 has lost connection with the controller/router.
Red	The HX220 has an issue.
Off - No light	Power is off, or the status LED is turned off.

Further Information & Assistance

To find out more information on the HX220, or if you're having issues getting your HX220 configured, please give our Support team a call on 13 22 88.

You can also view more information on the TP-Link website:

[HX220 Product Page](#)

[HX220 Support Documentation](#)